

EPIICS[®] HIGH

Lesson 4 Community Demographics

EPIICS[®] HIGH

Essential Question:

What are the demographics of my community? How will this information help me determine the needs of my neighborhood?



IEPICS[®] HIGH

Lesson 4 Community Demographics Overview

1. Class Basics

Notebook

Line of Learning

Standards



2. Video- Cycle of Service

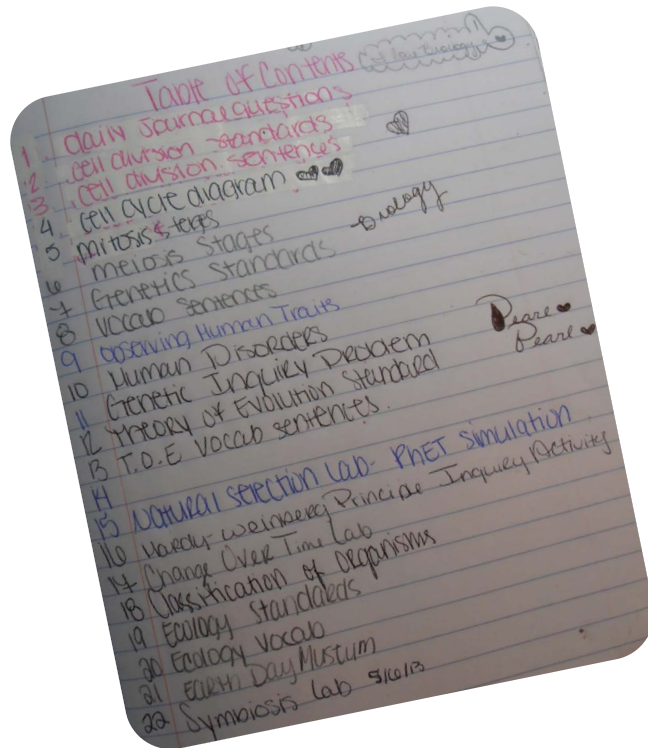
3. Understanding community demographics

4. Investigating community demographics

5. Reflection

Prepare your notebook

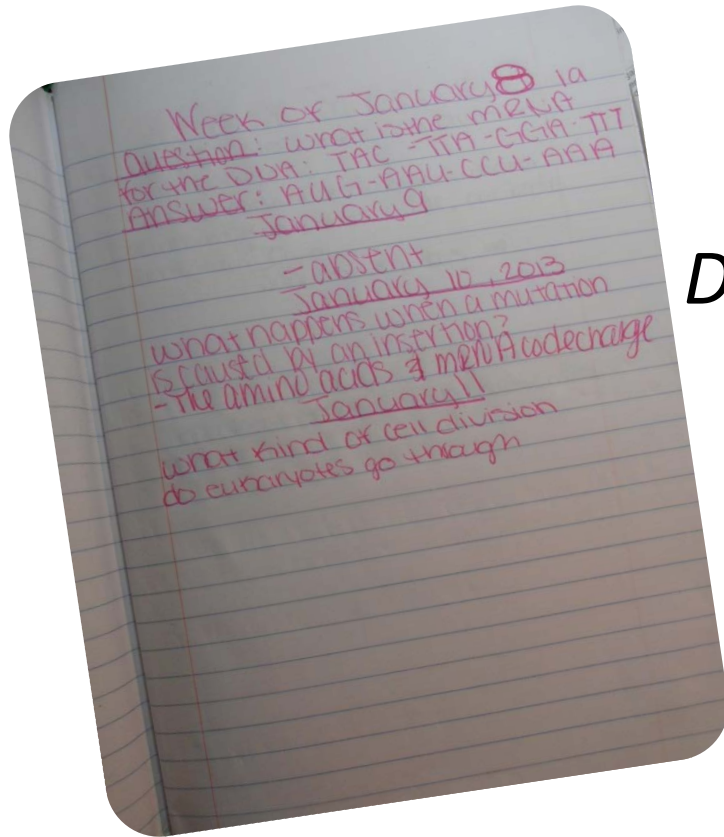
- Table of contents



Prepare your notebook

- Line of Learning Lesson 4
- **Question:** How do you think the demographics of your community will impact potential projects?

Date



Standards:

NGSS HS. Engineering Design HS-ETS1-1.

CC ELA/Literacy –RST.11-12.7

Standards Statement

Students will be using mathematical practices along with reading and writing skills to explore demographic information to determine if there is data that can be used to determine a need in the community that can be addressed through an engineering project.

Engaging Prior Knowledge

Think about your community and neighborhood

Discussion:

- *Can you think of one need that you have noticed?*
- *Can you think of one section of the population that is in need?*



Cycle of Service



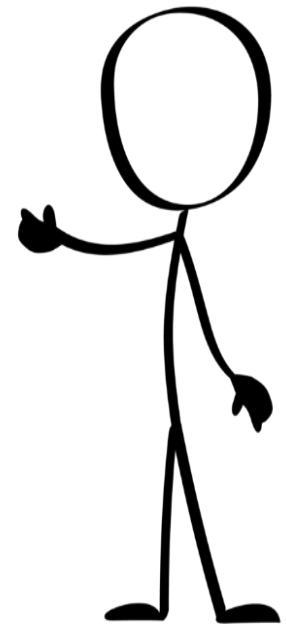
PEPICS[®] HIGH

Click on the picture to launch the youtube video

What needs did this video bring to light for this community?



- *Make an inference about how these needs would be related to community demographics?*
- *What needs are represented from examining the data for the community?*



IEPICS[®] HIGH

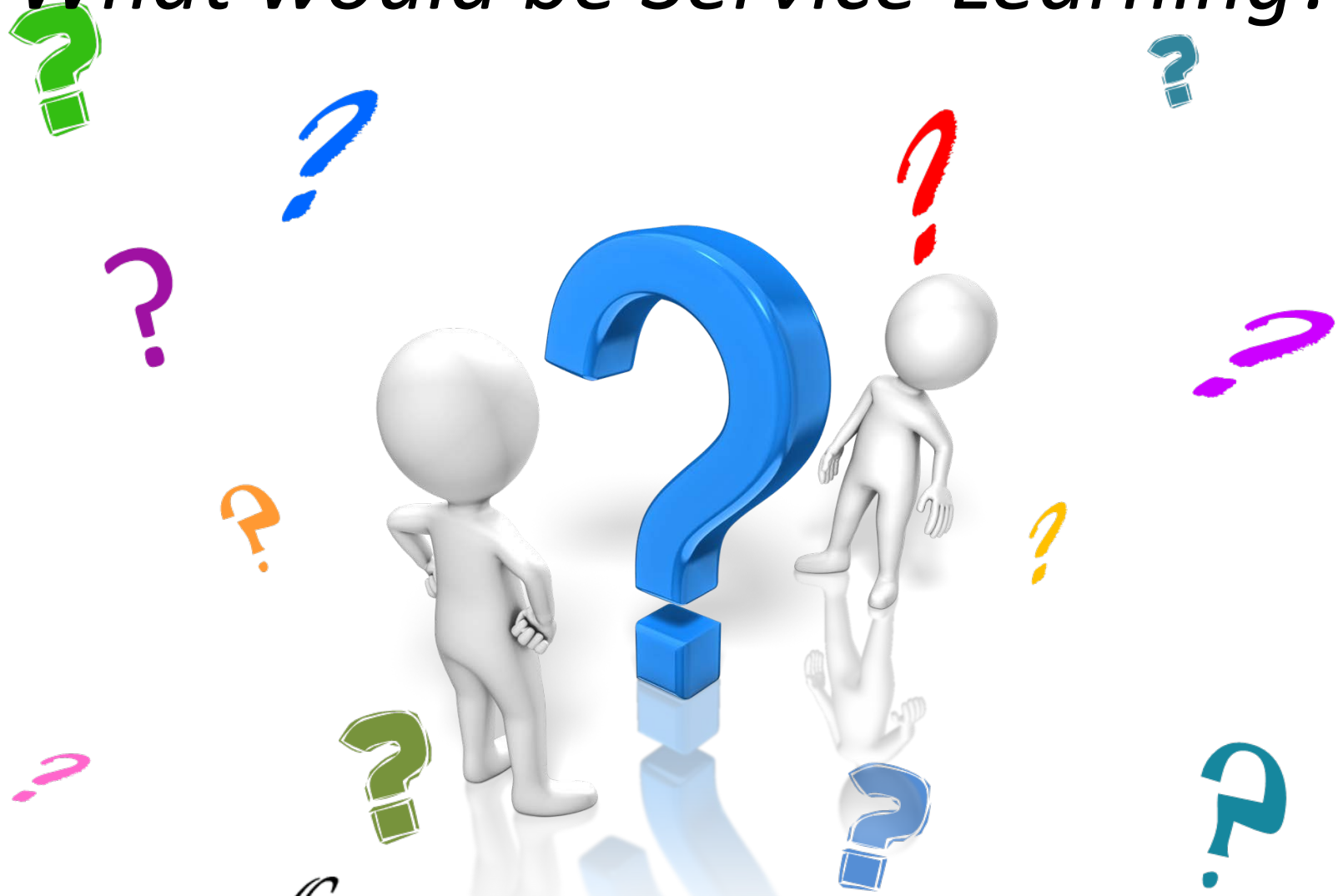
What is the difference between service-learning and volunteerism?



IEPICS[®] HIGH



What would be Service-Learning?



IEPICS[®] HIGH

Investigating Community Demographics

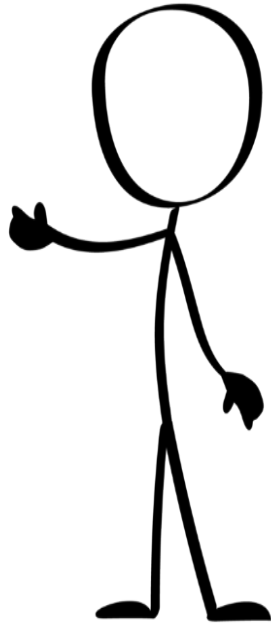
You will be investigating your own community and its demographics.

To find information use the following resources:

<http://www.city-data.com/> (this has information based on zip code)

- School web site
- County web site
- City web site
- State web site

Demographic Information



EPICS/HIGH

Community Demographics

Module 4 Community Demographics

This is a suggested sheet to help determine the needs of your community by examining the demographics associated with your neighborhood. Remember you can use your notebook as needed to add more information about your community.

Name	Statistics	Class	Implication for community needs
Demographic Characteristics			
Population and growth trends			
Age of population			
Average household size			
Ethnic composition			
Average household income			
Concentration of special groups such as minorities, low-income populations, the elderly, disabled populations			
Economic Characteristics			
Unemployment rates and trends			
Poverty rate			
Major employer and industries in the community			
Relevant housing characteristics			
The age type and condition of the housing structures			
Vacancy rate and length of residency			
Low income housing availability			
Occupancy rate- (renters vs owners)			
Community Partners and Facilities		Name, address contact person	Services provided and need served in the community.
Public Health Facilities			
Civic Centers			
Recreational Facilities			
Historical and Cultural Facilities			

Were there issues that were identified that you had never thought about before?

What do you think you could learn by asking these questions?

How can answering these questions about our community help us to work with other people?

Is there any underrepresented portion of our community that we will need to examine? Based on the data, what do you envision their needs to be?

IEPICS[®] HIGH



Demographic Information

After looking at this initial data, are there underrepresented sections of the community that do not have a voice in the community?

EPICS/HIGH

Community Demographics

Module 4 Community Demographics

This is a suggested sheet to help determine the needs of your community by examining the demographics associated with your neighborhood. Remember you can use your notebook as needed to add more information about your community.

Name _____ Class _____

Demographic Characteristics	Statistics	Implication for community needs
Population and growth trends		
Age of population		
Average household size		
Ethnic composition		
Average household income		
Concentration of special groups such as minorities, low-income populations, the elderly, disabled		
Economic Characteristics	Statistics	Implication for community needs
Unemployment rates and trends		
Poverty rate		
Major employer and industries in the community		
Relevant housing characteristics	Statistics	Implication for community needs
The age type and condition of the housing structures		
Vacancy rate and length of residency		
Low income housing availability		
Occupancy rate- (renters vs owners)		
Community Partners and Facilities	Name, address contact person	Services provided and need served in the community.
Public Health Facilities		
Civic Centers		
Recreational Facilities		
Historical and Cultural Facilities		

In Groups: Compile your Information

- *Are there underrepresented sections of the community?*

Discuss in your groups

- Create a narrative explaining the demographic needs within the community

EPICS/HIGH

Community Demographics

Module 4 Community Demographics

This is a suggested sheet to help determine the needs of your community by examining the demographics associated with your neighborhood. Remember you can use your notebook as needed to add more information about your community.

Name _____ Class _____

Demographic Characteristics	Statistics	Implication for community needs
Population and growth trends		
Age of population		
Average household size		
Ethnic composition		
Average household income		
Concentration of special groups such as minorities, low-income populations, the elderly, disabled populations		
Economic Characteristics	Statistics	Implication for community needs
Unemployment rates and trends		
Poverty rate		
Major employer and industries in the community		
Relevant housing characteristics	Statistics	Implication for community needs
The age type and condition of the housing structures		
Vacancy rate and length of residency		
Low income housing availability		
Occupancy rate- (renters vs owners)		
Community Partners and Facilities	Name, address contact person	Services provided and need served in the community.
Public Health Facilities		
Civic Centers		
Recreational Facilities		
Historical and Cultural Facilities		

Narrative of Demographics of your community

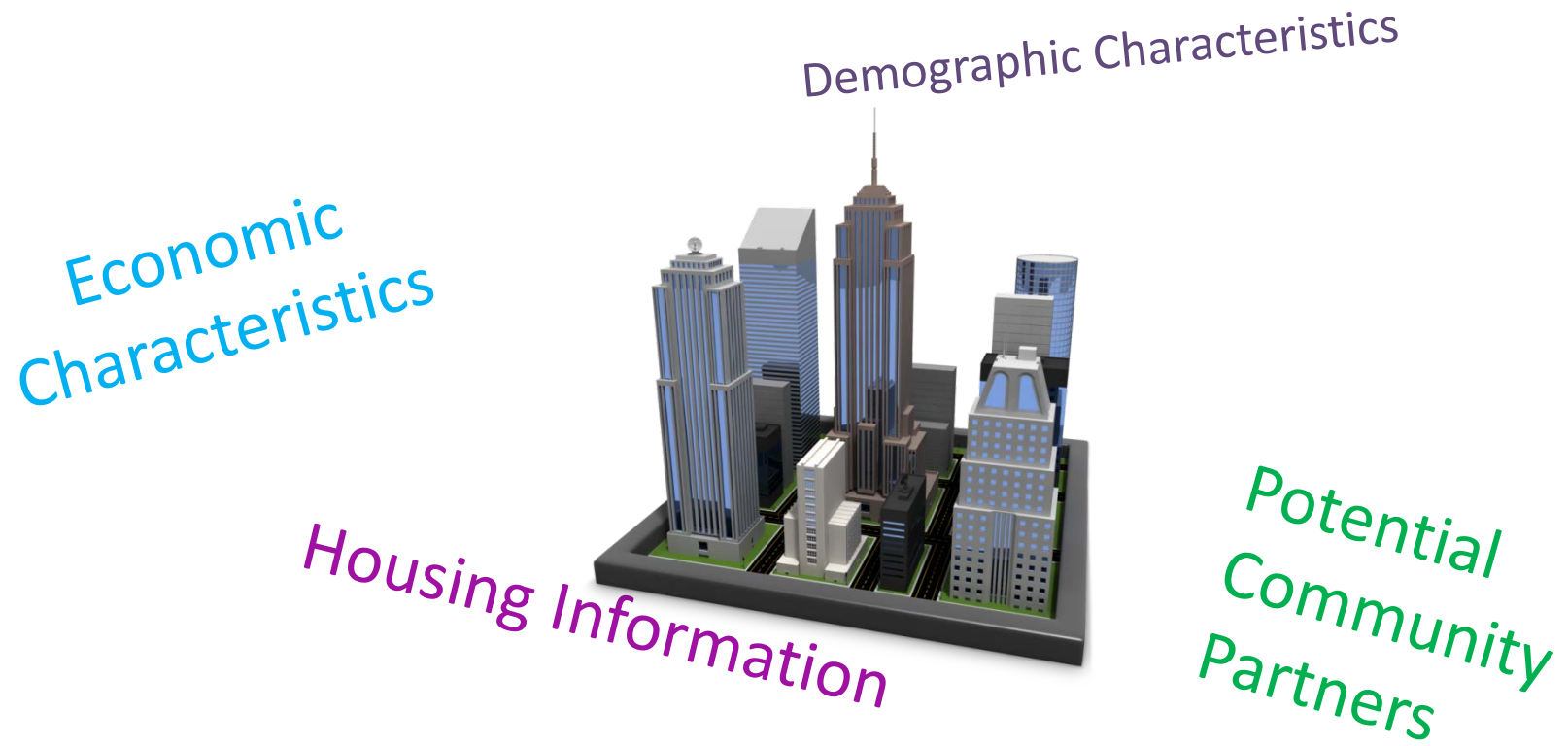


Discuss your findings with other members of your team and create a team document for your group with the following information to be sure to address:

- Demographic characteristics
- Economic characteristics
- Housing information
- Potential community partners

Discussion

Create a team document that addresses the demographics of your community



Rubric

Review the rubric that you will use to evaluate the development the narrative that explains the demographics in your community.

Reflection on Community Demographics
IEPICS HIGH
Rubric

Create a narrative explaining the demographic needs within the community that you have discovered through reviewing information.
Student Name: _____

CATEGORY	4	3	2	1
Opening Statement	The statement provides a clear, strong statement of the community demographics and the need represented.	The statement provides a clear statement of the community demographics and the need represented.	A statement is present, but does not give a clear picture of the community demographics and the need represented.	There is no opening statement concerning the demographics of the community.
Support of demographic statement	Includes 3 or more pieces of evidence (facts, statistics, examples, real-life experiences) that support the opening statement. The writer anticipates the reader's concerns, biases or arguments and has provided at least 1 counter-argument.	Includes 3 or more pieces of evidence (facts, statistics, examples, real-life experiences) that support the opening demographic needs statement.	Includes 2 pieces of evidence (facts, statistics, examples, real-life experiences) that support the opening demographic needs statement.	Includes 1 or fewer pieces of evidence (facts, statistics, examples, real-life experiences).
Evidence and Examples	All of the evidence and examples are specific, relevant and explanations are given that show how each piece of evidence supports the student's position concerning the demographic needs of the community.	Most of the evidence and examples are specific, relevant and explanations are given that show how each piece of evidence supports the student's position concerning the demographic needs of the community.	At least one of the pieces of evidence and examples is relevant and has an explanation that shows how that piece of evidence supports the student's position concerning the demographic needs of the community.	Evidence and examples are NOT relevant AND/OR are not explained.
Sentence Structure	All sentences are well-constructed with varied structure.	Most sentences are well-constructed and there is some varied sentence structure in the essay.	Most sentences are well-constructed, but there is no variation in structure.	Most sentences are not well-constructed or varied.
Reflection	Included 3 or more personal reflections about how the demographics and economic information of the community is important to determining the community needs. The reflections were well developed and organized.	Included 3 or more personal reflections about how the demographic and economic information of the community is important to determining the community needs. However, the reflection is lacking organization and theme development.	Included some personal reflection about how the demographic and economics of the community is important to determining the community needs. However, the reflection is lacking organization and theme development.	Included little personal reflection and lacked organization and theme development.

Reflection

Have you?

Examined the demographic and economic information for their community?

Did this investigation give a beginning glimpse into possibly underserved members of the community?

Use researching skills and critical thinking skills to be able to synthesize the information from the data into a reflective document?



Lesson Artifacts



Student sheet Lesson 4



- Notebook Check
- Table of Contents
- Line of learning



4 Community Demographics

Essential Question: What are the demographics of my community? How will this information help me determine the needs of my neighborhood?
Unpacking the Standards:

What needs were identified on the video Cycle of Service?

Make an inference about how these needs would be related to community demographics?

What needs are represented from examining the data for the community?

Name _____ Date _____ Period _____

Were there issues that were identified that you had never thought about before?

What do you think you could learn by thinking about those questions?

How can answering these questions about our community help us to work with other people?

How can answering these questions about community help our team in our service-learning project?

Is there any underrepresented portion of our community that we will need to examine? Based on the data, what do you envision their needs to be?

Exit Slip

Name _____ EPICS[®]/HIGH

Community Culture Debrief

I was most surprised about.....

One thing I learned about my community was....

1 ★

One need I saw was.....

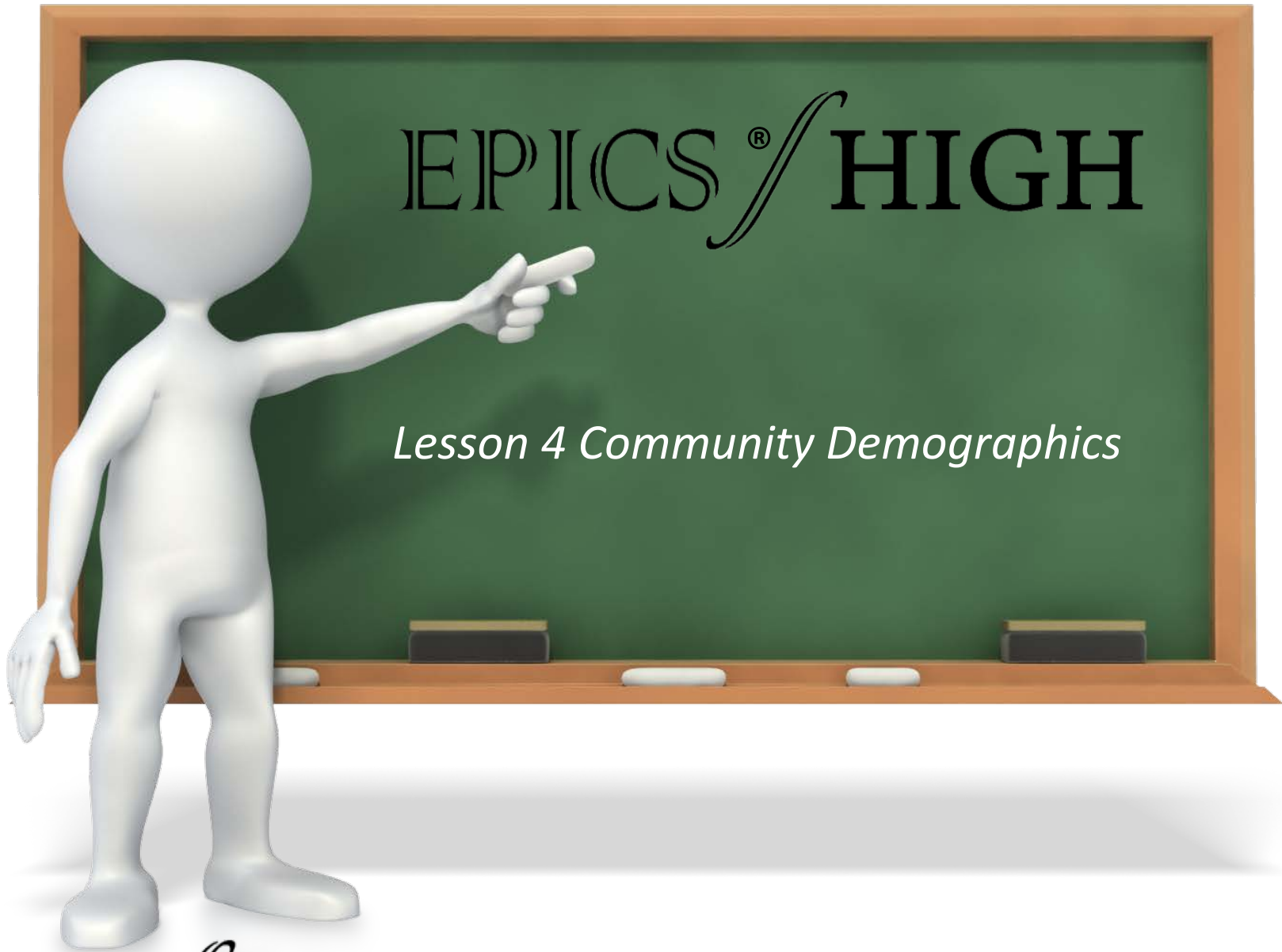
1 ★

My efforts in class were:

Fabulous 😊 OK Could Be Better ☹️

- *Answer the Questions on the sheet*
- *If you have further questions write them on the back*





EPIICS[®] HIGH

Lesson 4 Community Demographics

EPIICS[®] HIGH